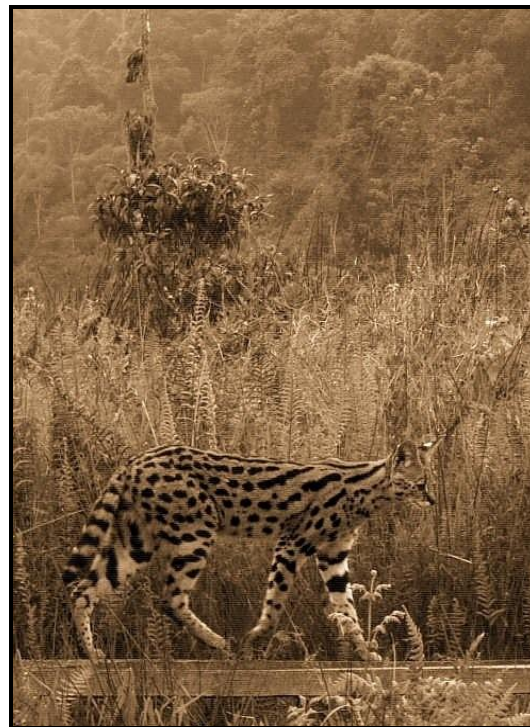




# Bird & Mammal Lists: Nyungwe National Park

December 2008

By Nerissa Chao,  
Wildlife Conservation Society



Rwanda Environment Management Authority  
Ministry of Lands, Environment, Forestry, Water and Mines



GEF



*a report prepared for and funded by:*  
Protected Areas Biodiversity Project (PAB)  
REMA/GEF/UNDP



# Contents

1. Introduction .....	2
2. Nyungwe Bird List .....	2
3. Nyungwe Mammal List .....	3
4. Camera Trapping.....	3
4.1 Results from Camera Traps.....	4
4.2 Camera Trap Photos.....	6
4.2.1 Primates .....	6
4.2.2 Carnivores .....	7
4.2.3 Artiodacyla .....	8
4.2.4 Hyracoidea .....	8
5. Recommendations .....	9
Appendix 1: Nyungwe Bird List 2008 .....	10
Appendix 2: Nyungwe Mammal List 2008 .....	16

## 1. Introduction

Species lists for birds and mammals were made for Nyungwe National Park in the early 1990s. However, there was a need to update the original species lists consolidating all existing information on birds and mammals. Long term monitoring of birds and mammals has been ongoing in the Park since 1996 and results from these studies need to be combined with the official Park species lists. In addition, a preliminary system of camera trapping was initiated in 2007 and continued in 2008 with the hope to target nocturnal and difficult to see animals as well as to confirm the ongoing presence of some species such as leopard and golden cat, within the Park.

A workshop was held to update both the bird and mammal list. Only additional species were added to the list following confirmed sightings and no species were taken off the lists.

## 2. Nyungwe Bird List

A workshop was held in Kitabi with participants from ORTPN Research & Monitoring team, ORTPN Nyungwe Bird guides, WCS-PCFN Bird & Mammal team and WCS-PCFN Research & Monitoring team in order to update the Nyungwe National Park bird list. The aim of this workshop was to pull together all the information currently held on birds and update the current bird list. Dowsett et al, (1990) had created a bird list for Nyungwe totaling 275 individuals. This was used as a base, with information added from the long term monitoring of birds in Nyungwe as well as observations from other park personnel, especially the ORTPN bird guide. Any new species not already recorded on the list was added following consensus from participants in the workshop and each species was rated in two ways following the method used by Dowsett et al. Firstly in terms of ease of observation and behaviour and secondly in terms of habitat:

- 1 = Not easily seen or rare
- 2 = Scarce, seasonal or local
- 3 = Easily seen or common
- F = Forest species
- NF = Non-forest species
- FE = Forest edge species.

The final list produced from the workshop included a total of 299 bird species (appendix 1). However, this list includes 27 species from the original list created by Dowsett et al. that have never been seen by the Park personnel. It also includes some rare visitor species to Nyungwe as well as migratory birds, forest edge and non-forest bird species. A total of 183 species have been classified as easily seen or common with 173 of those species being true forest species. There are at least 26 Albertine Rift endemics. All the birds were also assigned conservation risk status as assessed by the IUCN Red List of Threatened Species (2008) which showed 13 species in Nyungwe to be classified as either endangered, vulnerable or near threatened.

### 3. Nyungwe Mammal List

A mammal list for Nyungwe was created by Dowsett (1990). A further small mammal survey was carried out in 2003 by Robert Kityo. These two lists were combined together to provide the basis of the Nyungwe mammal list. Following the bird workshop, the same group of people discussed the mammal list incorporating results from the camera trapping that was carried out during 2008. The final list produced includes 96 species of which 63 are rodents or bats (appendix 2). There are at least 16 endemics including two primates (*Cercopithecus lhoesti* and *Cercopithecus hamlyni*). There are also 11 species which are classified by the IUCN Red List of Threatened Species (2008) as either Critically endangered, Endangered or Vulnerable, and a further 5 species classified as Near Threatened. Two species of bats are also classified as Data Deficient i.e. lack of available data to be able to classify the level of threat that they are facing.

The unsustainable levels of hunting that Nyungwe experienced in the recent past has led to the local extinction of large mammals such as elephants and buffalo. Populations of other species such as bushpigs and duikers, have been seriously affected although their numbers can hopefully recover. The presence of other species, including leopard, golden cat and giant forest hog, are no longer confirmed in the Park, although it is hoped that they do still exist even at low densities.

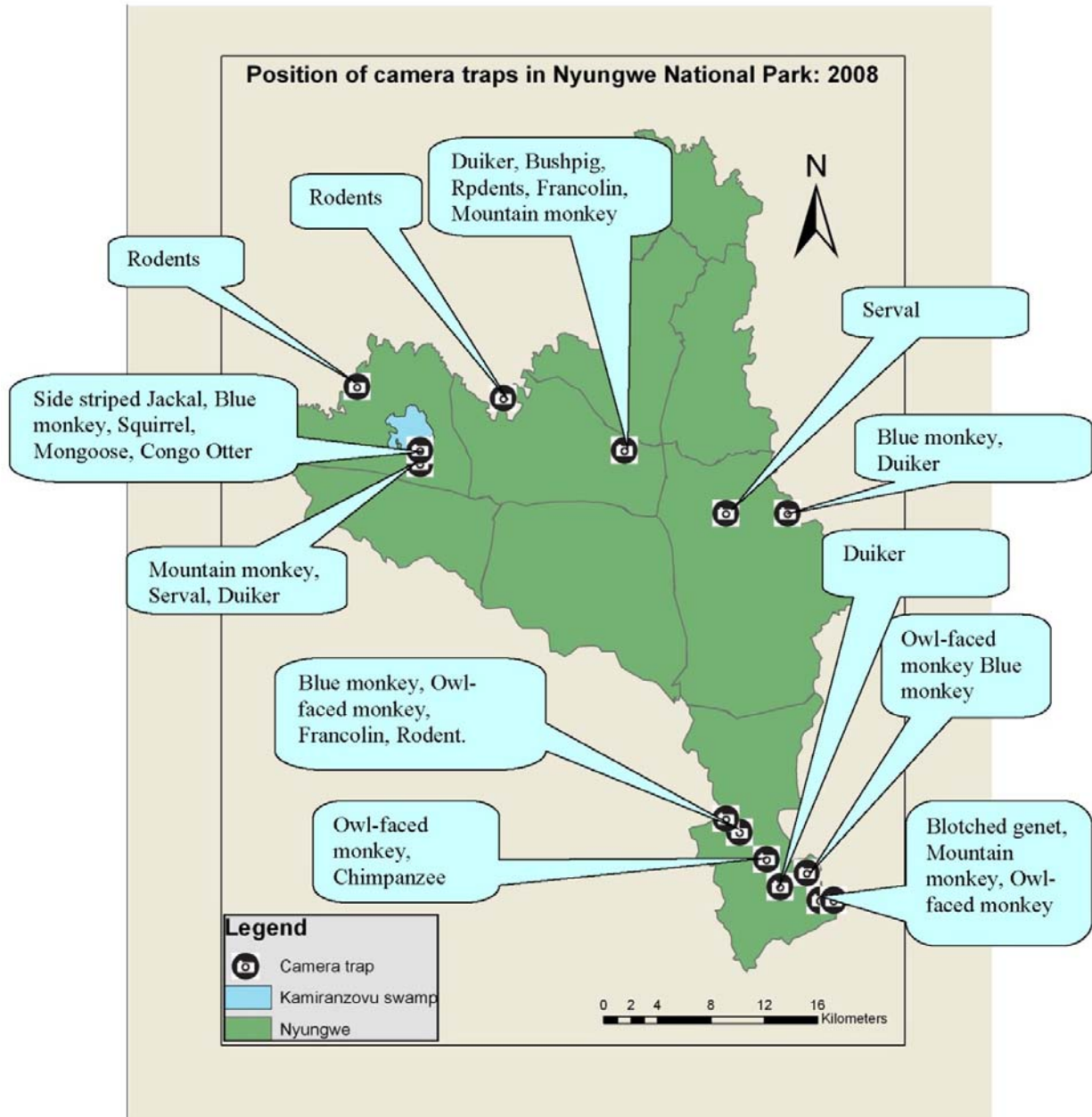
As few surveys on small mammals have been carried out in Nyungwe, it is likely that there are a number of other small mammals which are found in the Park but not included on the list.

### 4. Camera Trapping

Following purchase of camera trapping equipment in 2007 and the subsequent training of personnel in how to use them effectively, camera traps were placed around the Park. During 2008, they were used opportunistically either where staff were working or in particular areas where there were signs of animals (e.g. animal paths, scat etc), and no formal camera trap monitoring protocol was followed. The objective for 2008 was for personnel to gain experience in using the camera traps and to get opportunistic data on terrestrial fauna. At least 479 camera trap days were carried out during 2008. Unfortunately one camera trap was stolen from the Park near Nshili in October.

## 4.1 Results from Camera Traps

Map showing where camera traps were placed within Nyungwe National Park during 2008 (produced by Nicolas Ntare).





*Park staff setting up camera trap*

Site	Level of Effort (DaysxCamera Traps)	Animal	Frequency
Nshili	224 Camera Trap Days	Blotched genet	3
		Owl-faced monkey	18
		Blue monkey	6
		Chimpanzee	1
		Mountain monkey	1
		Francolinus	1
		Unidentified rodent	1
Kitabi	≥ 7 Camera Trap Days	Blue monkey	6
		Black-fronted duiker	1
Kamiranzovu	168 Camera Trap Days	Side-striped Jackal	2
		Serval	3
		Mountain monkey	11
		Unidentified mongoose	2
		Congo Clawless Otter	1
		Unidentified duiker	1
		Blue monkey	2
Uwasenkoko	14 Camera Trap Days	Serval	1
Congo-nile trail	20 Camera Trap Days	Unidentified duiker	8
		Bush pig	17
		Tree hyrax	1
		Francolinus	6
		Mountain monkey	1
		Unidentified rodent	7
Karamba	14 Camera Trap Days	Mountain monkey	1
Waterfall	32 Camera Trap Days	Unidentified rodent	6

*Table 1: Results from Camera Trapping during 2008*



## 4.2 Camera Trap Photos

### 4.2.1 Primates

Eastern Chimpanzee (*Pan troglodytes schweinfurthii*), Owl-faced monkey (*Cercopithecus hamlyni*), Blue monkey (*Cercopithecus mitis*), Mountain monkey (*Cercopithecus l'hoesti*).



#### 4.2.2 Carnivores

Blotched genet (*Genetta tigrina*), Mongoose, Congo Clawless otter (*Aonyx congicus*), Serval (*Felis Serval*)





#### 4.2.3 Artiodactyla

Duiker, Black-fronted duiker (*Cephalophus nigrifrons*).



#### 4.2.4 Hyracoidea

Western tree hyrax (*Dendrohyrax dorsalis*)



## 5. Recommendations

The last in-depth biodiversity survey was carried out in 1999. It is recommended that a full biodiversity survey for the Park be carried out in 2009, 10 years after the last survey. In addition to the large mammals, birds and plants that were assessed in the previous study it is also recommended that surveys of herptofauna and small mammals are also added with the possibility of nocturnal primates. Little is known about the species or distributions of any of these groups in Nyungwe National Park and it is likely that new species for Nyungwe will be added to the species lists following in-depth surveys. Results from a preliminary herptofauna survey carried out during 13 days in November 2008, found 27 species of which 12 are amphibians and 15 are reptiles. This survey work will continue in 2009 to survey additional sites with different altitudes and habitats.

A more formal camera trapping monitoring protocol should also be developed with the aim to target specific species which are currently unconfirmed as to whether they are still found within the Park such as leopard and golden cat.

## Appendix 1: Nyungwe Bird List 2008

Species	Genus	Species	Family	IUCN Threat Category	Rating
Goliath Heron	<i>Ardea</i>	<i>goliath</i>	Ardeidae	LC	1
Black-headed Heron	<i>Ardea</i>	<i>melanocephala</i>	Ardeidae	LC	3F
Squacco Heron	<i>Ardeola</i>	<i>ralloides</i>	Ardeidae	LC	2F
Black-crowned Night-Heron	<i>Nycticorax</i>	<i>nycticorax</i>			2F
Cattle Egret	<i>Bubulcus</i>	<i>ibis</i>	Ardeidae	LC	2F
Long-tailed Cormorant	<i>Phalacrocorax</i>	<i>africanus</i>		LC	1NF
Hamerkop	<i>Scopus</i>	<i>umbretta</i>	Scopidae	LC	3F
White Stork	<i>Ciconia</i>	<i>ciconia</i>	Ciconiidae	LC	1NF
Hadada	<i>Bostrychia</i>	<i>hagedash</i>	Threskiornithidae	LC	3F
Sacred ibis	<i>Threkiornis</i>	<i>aethiopicus</i>	Threskiornithidae	LC	3FE
African Black Duck	<i>Anas</i>	<i>sparsa</i>	Anatidae	LC	2F
Yellow-billed Duck	<i>Anas</i>	<i>undalata</i>	Anatidae	LC	3NF
Hartlaub's Duck	<i>Pteronetta</i>	<i>hartlaubii</i>	Anatidae	LC	1
White-headed Vulture	<i>Trigonoceps</i>	<i>occipitalis</i>	Accipitridae	VU	1
African Harrier Hawk	<i>Polyboroides</i>	<i>typus</i>	Accipitridae	LC	3F
Bateleur	<i>Terathopius</i>	<i>ecaudatus</i>	Accipitridae	LC	2F
Great Sparrowhawk	<i>Accipiter</i>	<i>melanoleucus</i>	Accipitridae	LC	3F
Rufous Sparrowhawk	<i>Accipiter</i>	<i>rufiventris</i>	Accipitridae	LC	3F
African Goshawk	<i>Accipiter</i>	<i>tachiro</i>	Accipitridae	LC	3F
Wahlberg's Eagle	<i>Aquila</i>	<i>wahlbergi</i>	Accipitridae	LC	2F
Augur Buzzard	<i>Buteo</i>	<i>augur</i>	Accipitridae	LC	3F
Common Buzzard	<i>Buteo</i>	<i>buteo</i>	Accipitridae	LC	2F
Mountain Buzzard	<i>Buteo</i>	<i>oreophilus</i>	Accipitridae	LC	3F
Cassin's Hawk Eagle	<i>Spizaetus</i>	<i>africanus</i>	Accipitridae	LC	2F
Long-crested Eagle	<i>Lophaetus</i>	<i>occipitalis</i>	Accipitridae	LC	3F
Martial Eagle	<i>Polemaetus</i>	<i>bellicosus</i>	Accipitridae	LC	2F
Crowned Eagle	<i>Stephanoaetus</i>	<i>coronatus</i>	Accipitridae	LC	3F
Black Kite	<i>Milvus</i>	<i>migrans</i>	Accipitridae	LC	3F
Honey Buzzard	<i>Pernis</i>	<i>apivorus</i>	Accipitridae	LC	2F
Black-shouldered Kite	<i>Elanus</i>	<i>caeruleus</i>	Accipitridae	LC	1
Bat Hawk	<i>Macheiramphus</i>	<i>alcinus</i>	Accipitridae	LC	1FE
Lanner Falcon	<i>Falco</i>	<i>biarmicus</i>	Falconidae	LC	1F
Peregrine Falcon	<i>Falco</i>	<i>peregrinus</i>	Falconidae	LC	1FE
European Hobby	<i>Falco</i>	<i>subbuteo</i>	Falconidae	LC	1FE
Common Kestrel	<i>Falco</i>	<i>tinnunculus</i>	Falconidae	LC	1F
Common Quail	<i>Coturnix</i>	<i>coturnix</i>	Phasianidae	LC	1FE
Blue Quail	<i>Coturnix</i>	<i>adansonii</i>	Phasianidae	LC	1F
Red-winged Francolin	<i>Francolinus</i>	<i>levaillantii</i>	Phasianidae	LC	1FE
Handsome Francolin	<i>Francolinus</i>	<i>nobilis</i>	Phasianidae	LC	3F
Scaly Francolin	<i>Francolinus</i>	<i>squamatus</i>	Phasianidae	LC	3FE
Crowned Crane	<i>Balearica</i>	<i>regulorum</i>	Gruidae	LC	2NF
Black Crake	<i>Limnocorax</i>	<i>flavirostra</i>	Rallidae	LC	2F
African Water Rail	<i>Rallus</i>	<i>caerulescens</i>	Rallidae	LC	3F
Buff-spotted Flufftail	<i>Sarothrura</i>	<i>elegans</i>	Rallidae	LC	3F
White-spotted Flufftail	<i>Sarothrura</i>	<i>pulchra</i>	Rallidae	LC	2F
Red-chested Flufftail	<i>Sarothrura</i>	<i>rufa</i>	Rallidae	LC	3F

Common Sandpiper	<i>Actitis</i>	<i>hypoleucos</i>	Scolopacidae	LC	1F
Wood Sandpiper	<i>Tringa</i>	<i>glareola</i>	Scolopacidae	LC	3F
Green Sandpiper	<i>Tringa</i>	<i>ochropus</i>	Scolopacidae	LC	2F
Common Snipe	<i>Gallinago</i>	<i>gallinago</i>	Scolopacidae	LC	2F
Lemon Dove	<i>Aplopelia</i>	<i>larvata</i>	Columbidae	LC	3F
Olive Pigeon	<i>Columba</i>	<i>arquatrix</i>	Columbidae	LC	3F
Afep Pigeon	<i>Columba</i>	<i>unicincta</i>	Columbidae	LC	2F
Dusky Turtle Dove	<i>Streptopelia</i>	<i>lugens</i>	Columbidae	LC	2F
Red-eyed Dove	<i>Streptopelia</i>	<i>semitorquata</i>	Columbidae	LC	3F
Blue-spotted Wood Dove	<i>Turtur</i>	<i>afer</i>	Columbidae	LC	1F
Tambourine Dove	<i>Turtur</i>	<i>tympanistria</i>	Columbidae	LC	3F
Green Pigeon	<i>Treron</i>	<i>australis</i>	Columbidae	LC	3F
Brown-necked Parrot	<i>Poicephalus</i>	<i>robustus</i>	Psittacidae	LC	1
Grey Parrot	<i>Psittacus</i>	<i>erithacus</i>	Psittacidae	NT	3F
Great Blue Turaco	<i>Corythaeola</i>	<i>cristata</i>	Musophagidae	LC	3F
Ross's Turaco	<i>Musophaga</i>	<i>rossae</i>	Musophagidae	LC	3F
Rwenzori Turaco	<i>Ruwenzornis</i>	<i>johnstoni</i>	Musophagidae	LC	3F
Black-billed Turaco	<i>Tauraco</i>	<i>schuetti</i>	Musophagidae	LC	3F
Barred Long-tailed Cuckoo	<i>Cercococcyx</i>	<i>montanus</i>	Cuculidae	LC	3F
Emerald Cuckoo	<i>Chrysococcyx</i>	<i>cupreus</i>	Cuculidae	LC	3F
Klaas' Cuckoo	<i>Chrysococcyx</i>	<i>klaas</i>	Cuculidae	LC	3F
Eurasian Cuckoo	<i>Cuculus</i>	<i>canorus</i>	Cuculidae	LC	1
Black Cuckoo	<i>Cuculus</i>	<i>clamosus</i>	Cuculidae	LC	3F
Red-chested Cuckoo	<i>Cuculus</i>	<i>solitarius</i>	Cuculidae	LC	3F
Levaillant's Cuckoo	<i>Oxylophus</i>	<i>levaillantii</i>		LC	3F
Green Coucal	<i>Ceuthmochares</i>	<i>aereus</i>	Cuculidae	LC	3F
Blue-headed Coucal	<i>Centropus</i>	<i>monachus</i>	Cuculidae	LC	3F
Cape Grass Owl	<i>Tyto</i>	<i>capensis</i>	Tytonidae	LC	2F
Spotted Eagle Owl	<i>Bubo</i>	<i>africanus</i>	Strigidae	LC	1F
Verreaux's Eagle Owl	<i>Bubo</i>	<i>lacteus</i>	Strigidae	LC	3F
Fraser's Eagle Owl	<i>Bubo</i>	<i>poensis</i>	Strigidae	LC	3F
African Wood Owl	<i>Strix</i>	<i>woodfordii</i>	Strigidae	LC	3F
Albertine Owlet	<i>Glaucidium</i>	<i>albertinum</i>	Strigidae	VU	1F
Barred Owlet	<i>Glaucidium</i>	<i>capense</i>	Strigidae	LC	1
Red-chested Owlet	<i>Glaucidium</i>	<i>tephronotum</i>	Strigidae	LC	3F
Square-tailed Nightjar	<i>Caprimulgus</i>	<i>fossii</i>	Caprimulgidae	LC	2F
Fiery-necked Nightjar	<i>Caprimulgus</i>	<i>pectoralis</i>	Caprimulgidae	LC	3FE
Montane Nightjar	<i>Caprimulgus</i>	<i>poliocephalus</i>	Caprimulgidae	LC	1
Ruwenzori Nightjar	<i>Caprimulgus</i>	<i>ruwenzorii</i>	Caprimulgidae	LC	3F
Pennant-winged Nightjar	<i>Macrodipteryx</i>	<i>vexillarius</i>	Caprimulgidae	LC	3F
Eurasian Swift	<i>Apus</i>	<i>apus</i>	Apodidae	LC	2F
White-rumped Swift	<i>Apus</i>	<i>caffer</i>	Apodidae	LC	3F
Scarce Swift	<i>Schoutedenapus</i>	<i>myoptilus</i>	Apodidae	LC	2F
Speckled Mousebird	<i>Colius</i>	<i>striatus</i>	Colidae	LC	3F
Narina's Trogon	<i>Apaloderma</i>	<i>narina</i>	Trogonidae	LC	3F
Bar-tailed Trogon	<i>Apaloderma</i>	<i>vittatum</i>	Trogonidae	LC	3F
Shining-blue Kingfisher	<i>Alcedo</i>	<i>quadribrachys</i>	Alcedinidae	LC	1
Chestnut-bellied Kingfisher	<i>Halcyon</i>	<i>leucocephala</i>	Alcedinidae	LC	2F
Blue-breasted kingfisher	<i>Halcyon</i>	<i>malimbica</i>	Alcedinidae	LC	2F
African Pygmy Kingfisher	<i>Ispidina</i>	<i>Picta</i>		LC	3F
Eurasian Bee-eater	<i>Merops</i>	<i>apiaster</i>	Meropidae	LC	2F
Cinnamon-chested Bee-eater	<i>Merops</i>	<i>oreobates</i>	Meropidae	LC	3F



Madagascar Bee-eater	<i>Merops</i>	<i>superciliosus</i>	Meropidae	LC	1
Eurasian Roller	<i>Coracias</i>	<i>garrulus</i>	Coraciidae	NT	1
Eurasian Hoopoe	<i>Upupa</i>	<i>epops</i>	Upupidae	LC	1
African Hoopoe	<i>Upupa</i>	<i>africana</i>	Upupidae		1F
White-headed Wood Hoopoe	<i>Phoeniculus</i>	<i>bollei</i>	Phoeniculidae	LC	3F
Forest Wood Hoopoe	<i>Phoeniculus</i>	<i>castaneiceps</i>	Phoeniculidae	LC	1
Green Wood Hoopoe	<i>Phoeniculus</i>	<i>purpureus</i>	Phoeniculidae	LC	1F
Black and White Casqued Hornbill	<i>Ceratogymna</i>	<i>subcylindricus</i>	Bucerotidae	LC	3F
Crowned Hornbill	<i>Tockus</i>	<i>alboterminatus</i>	Bucerotidae	LC	3F
Grey-throated Barbet	<i>Gymnobucco</i>	<i>bonapartei</i>	Capitonidae	LC	3F
Yellow-rumped Tinkerbird	<i>Pogoniulus</i>	<i>bilineatus</i>	Capitonidae	LC	3F
Western Green Tinkerbird	<i>Pogoniulus</i>	<i>coryphaeus</i>	Capitonidae	LC	2F
Yellow-billed Barbet	<i>Trachylaemus</i>	<i>purpuratus</i>	Capitonidae	LC	1
Least Honeyguide	<i>Indicator</i>	<i>exilis</i>	Indicatoridae	LC	3F
Greater Honeyguide	<i>Indicator</i>	<i>indicator</i>	Indicatoridae	LC	2F
Lesser Honeyguide	<i>Indicator</i>	<i>minor</i>	Indicatoridae	LC	3F
Dwarf Honeyguide	<i>Indicator</i>	<i>pumilio</i>	Indicatoridae	NT	2F
Scaly-throated Honeyguide	<i>Indicator</i>	<i>variegatus</i>	Indicatoridae	LC	3FE
Thick-Billed Honeyguide	<i>Indicator</i>	<i>Conirostris</i>			2F
Green-backed Honeyguide	<i>Prodotiscus</i>	<i>zambesiae</i>	Indicatoridae	LC	1
Red throated Wryneck	<i>Jynx</i>	<i>ruficollis</i>		LC	2F
Buff-spotted Woodpecker	<i>Campethera</i>	<i>nivosa</i>	Picidae	LC	3F
Fine-banded Woodpecker	<i>Campethera</i>	<i>tullbergi</i>	Picidae	LC	3F
Cardinal Woodpecker	<i>Dendropicos</i>	<i>fuscescens</i>	Picidae	LC	1F
Elliot's Woodpecker	<i>Mesopicos</i>	<i>elliottii</i>	Picidae	LC	3F
Olive Woodpecker	<i>Dendropicos</i>	<i>griseocephalus</i>	Picidae	LC	3F
African Broadbill	<i>Smithornis</i>	<i>capensis</i>	Eurylaimidae	LC	3F
House Martin	<i>Delichon</i>	<i>urbica</i>	Hirundinidae	LC	3FE
Lesser Striped Swallow	<i>Hirundo</i>	<i>abyssinica</i>	Hirundinidae	LC	3NF
Angola Swallow	<i>Hirundo</i>	<i>angolensis</i>	Hirundinidae	LC	3F
Red-rumped Swallow	<i>Hirundo</i>	<i>daurica</i>	Hirundinidae	LC	2F
African Rock Martin	<i>Hirundo</i>	<i>fuligula</i>	Hirundinidae	LC	2F
Eurasian Swallow	<i>Hirundo</i>	<i>rustica</i>	Hirundinidae	LC	2F
Mosque Swallow	<i>Hirundo</i>	<i>senegalensis</i>	Hirundinidae	LC	3F
White-headed Rough-wing	<i>Psalidoprocne</i>	<i>albiceps</i>	Hirundinidae	LC	2F
Black Rough-wing	<i>Psalidoprocne</i>	<i>pristoptera</i>	Hirundinidae	LC	3F
African Sand Martin	<i>Riparia</i>	<i>paludicola</i>	Hirundinidae	LC	2F
European Sand Martin	<i>Riparia</i>	<i>riparia</i>	Hirundinidae	LC	2F
Fork-tailed Drongo	<i>Dicrurus</i>	<i>adsimilis</i>	Dicruridae	LC	2F
African Golden Oriole	<i>Oriolus</i>	<i>auratus</i>	Oriolidae	LC	1F
Montane Oriole	<i>Oriolus</i>	<i>percivali</i>	Oriolidae	LC	3F
White-necked Raven	<i>Corvus</i>	<i>albicollis</i>	Corvidae	LC	3F
Stripe-breasted Tit	<i>Parus</i>	<i>fasciiventer</i>	Paridae	LC	3F
Dusky Tit	<i>Parus</i>	<i>funereus</i>	Paridae	LC	3F
African Hill Babbler	<i>Pseudoalcippe</i>	<i>abyssinica</i>	Timaliidae	LC	3F
Grey-chested Illadopsis	<i>Kakamega</i>	<i>poliothorax</i>	Timaliidae	LC	3F
Red-collared Mountain Babbler	<i>Kupeornis</i>	<i>rufocinctus</i>	Timaliidae	NT	3F
Mountain Illadopsis	<i>Illadopsis</i>	<i>pyrrhoptera</i>	Timaliidae	LC	3F
Black Cuckoo Shrike	<i>Campephaga</i>	<i>flava</i>	Campephagidae	LC	3F
Grey Cuckoo Shrike	<i>Coracina</i>	<i>caesia</i>	Campephagidae	LC	3F
Cameroon Sombre Greenbul	<i>Andropadus</i>	<i>curvirostris</i>	Pycnonotidae	LC	2F
Slender-billed Greenbul	<i>Andropadus</i>	<i>gracilirostris</i>	Pycnonotidae	LC	3F

Yellow-whiskered Greenbul	<i>Andropadus</i>	<i>latirostris</i>	Pycnonotidae	LC	3F
Shelley's Greenbul	<i>Andropadus</i>	<i>masukuensis</i>	Pycnonotidae	LC	1F
Mountain Greenbul	<i>Andropadus</i>	<i>tephrolaemus</i>	Pycnonotidae	LC	3F
Fisher's Greenbul	<i>Phyllastrephus</i>	<i>fischeri</i>	Pycnonotidae	LC	1
Yellow-streaked Greenbul	<i>Phyllastrephus</i>	<i>flavostriatus</i>	Pycnonotidae	LC	3F
Placid Greenbul	<i>Phyllastrephus</i>	<i>placidus</i>			3F
Common/Yellow-vented Bulbul	<i>Pycnonotus</i>	<i>barbatus</i>	Pycnonotidae	LC	3F
Red-throated Alethe	<i>Alethe</i>	<i>poliophrys</i>	Turdidae	LC	3F
Brown-backed Scrub Robin	<i>Cercotrichas</i>	<i>hartlaubi</i>	Turdidae	LC	1FE
Cape Robin Chat	<i>Cossypha</i>	<i>caffra</i>	Turdidae	LC	2FE
Red-capped Robin Chat	<i>Cossypha</i>	<i>natalensis</i>	Turdidae	LC	3F
Snowy-headed Robin Chat	<i>Cossypha</i>	<i>niveicapilla</i>	Turdidae	LC	2F
White-bellied Robin Chat	<i>Cossyphicula</i>	<i>roberti</i>	Turdidae	LC	3F
Archer's Ground Robin	<i>Cossypha</i>	<i>archeri</i>	Turdidae	LC	3F
Miombo Rock Thrush	<i>Monticola</i>	<i>angolensis</i>	Turdidae	LC	1F
White-tailed Ant Thrush	<i>Neocossyphus</i>	<i>poensis</i>	Turdidae	LC	3F
White-starred Forest Robin	<i>Pogonochila</i>	<i>stellata</i>	Turdidae	LC	3F
White headed black chat	<i>Myrmecocichla</i>	<i>arnoti</i>	Turdidae	LC	1F
Whinchat	<i>Saxicola</i>	<i>rubetra</i>	Turdidae	LC	1F
Stonechat	<i>Saxicola</i>	<i>torquata</i>	Turdidae	LC	3F
Equatorial Akalat	<i>Sheppardia</i>	<i>aequatorialis</i>	Turdidae	LC	3F
Forest Robin	<i>Stiphornis</i>	<i>erythrothorax</i>	Turdidae	LC	2F
Olive thrush	<i>Turdus</i>	<i>olivaceus</i>	Turdidae	LC	3F
Kivu Ground Thrush	<i>Zoothera</i>	<i>tanganjicae</i>	Turdidae	NT	3F
Kungwe Apalis	<i>Apalis</i>	<i>argentea</i>	Sylviidae	EN	2F
Grey Apalis	<i>Apalis</i>	<i>cinerea</i>	Sylviidae	LC	3F
Black-throated Apalis	<i>Apalis</i>	<i>jacksoni</i>	Sylviidae	LC	3F
Montane Masked Apalis	<i>Apalis</i>	<i>personata</i>	Sylviidae	LC	3F
Masked Apalis	<i>Apalis</i>	<i>binotata</i>	Sylviidae	LC	1
Chestnut-throated Apalis	<i>Apalis</i>	<i>porphyrolaema</i>	Sylviidae	LC	3F
Black-collared Apalis	<i>Apalis</i>	<i>pulchra</i>	Sylviidae	LC	1
Buff-throated Apalis	<i>Apalis</i>	<i>rufogularis</i>	Sylviidae	LC	1
Collared Apalis	<i>Apalis</i>	<i>ruwenzori</i>	Sylviidae	LC	3F
Black-faced Rufous Warbler	<i>Bathmocercus</i>	<i>rufus</i>	Sylviidae	LC	3F
Little Rush Warbler	<i>Bradypterus</i>	<i>baboecala</i>	Sylviidae	LC	1
Cinnamon Bracken Warbler	<i>Bradypterus</i>	<i>cinnamomeus</i>	Sylviidae	LC	3F
Grauer's Rush Warbler	<i>Bradypterus</i>	<i>graueri</i>	Sylviidae	EN	3F
Evergreen Forest Warbler	<i>Bradypterus</i>	<i>lopezi</i>	Sylviidae	LC	3F
Grey-backed Camaroptera	<i>Camaroptera</i>	<i>brachyura</i>	Sylviidae	LC	3F
Yellow Warbler	<i>Chloropeta</i>	<i>natalensis</i>	Sylviidae	LC	3F
Mountain Yellow Warbler	<i>Chloropeta</i>	<i>similis</i>	Sylviidae	LC	3F
Wing-snapping Cisticola	<i>Cisticola</i>	<i>ayresii</i>	Sylviidae	LC	1FE
Siffling Cisticola	<i>Cisticola</i>	<i>brachyptera</i>	Sylviidae	LC	1
Chubb's Cisticola	<i>Cisticola</i>	<i>chubbi</i>	Sylviidae	LC	3F
Grey-capped Warbler	<i>Eminia</i>	<i>lepida</i>	Sylviidae	LC	3F
Grauer's Warbler	<i>Graueria</i>	<i>vittata</i>	Sylviidae	LC	3F
Short-tailed/Neumann's Warbler	<i>Hemitesia</i>	<i>neumanni</i>	Sylviidae	LC	3F
Violet-backed Hyliota	<i>Hyliota</i>	<i>violacea</i>	Sylviidae	LC	2F
Red-faced Woodland Warbler	<i>Phylloscopus</i>	<i>laetus</i>	Sylviidae	LC	3F
Willow Warbler	<i>Phylloscopus</i>	<i>trochilus</i>	Sylviidae	LC	3F
Brown Woodland Warbler	<i>Phylloscopus</i>	<i>umbrovirens</i>	Sylviidae	LC	3F
Banded Prinia	<i>Prinia</i>	<i>bairdii</i>	Sylviidae	LC	3F

White-chinned Prinia	<i>Prinia</i>	<i>leucopogon</i>	Sylviidae	LC	3F
Tawny-flanked Prinia	<i>Prinia</i>	<i>subflava</i>	Sylviidae	LC	3F
Blackcap	<i>Sylvia</i>	<i>atricapilla</i>	Sylviidae	LC	1
Garden Warbler	<i>Sylvia</i>	<i>borin</i>	Sylviidae	LC	2FE
White-browed Crombec	<i>Sylvietta</i>	<i>leucophrys</i>	Sylviidae	LC	3F
Yellow-eyed Black Flycatcher	<i>Melaenornis</i>	<i>ardesiacus</i>	Muscicapidae	LC	3F
Slaty flycatcher	<i>Melaenornis</i>	<i>chocolatinus</i>	Muscicapidae	LC	3F
White-eyed Slaty Flycatcher	<i>Melaenornis</i>	<i>fisheri</i>	Muscicapidae	LC	3F
Dusky Flycatcher	<i>Muscicapa</i>	<i>adusta</i>	Muscicapidae	LC	3F
Ashy Flycatcher	<i>Muscicapa</i>	<i>caerulescens</i>	Muscicapidae	LC	1F
Cassin's Grey Flycatcher	<i>Muscicapa</i>	<i>cassini</i>	Muscicapidae	LC	1
Chapin's Flycatcher	<i>Muscicapa</i>	<i>lendu</i>	Muscicapidae	VU	1F
Spotted Flycatcher	<i>Muscicapa</i>	<i>striata</i>	Muscicapidae	LC	1F
Lead-coloured Flycatcher	<i>Myioparus</i>	<i>plumbeus</i>	Muscicapidae	LC	1
Rwenzori Batis	<i>Batis</i>	<i>diops</i>	Muscicapidae	LC	3F
Chin-spot Batis	<i>Batis</i>	<i>molitor</i>	Muscicapidae	LC	3F
Yellow-bellied Wattle-eye	<i>Dyaphorophya</i>	<i>concreta</i>	Muscicapidae	LC	3F
brown-throated/Common Wattle-eye	<i>Platysteira</i>	<i>cyanea</i>	Muscicapidae	LC	2F
Black-throated Wattle-eye	<i>Platysteira</i>	<i>peltata</i>	Muscicapidae	LC	2F
White-tailed Blue Flycatcher	<i>Elminia</i>	<i>albicauda</i>	Muscicapidae	LC	3F
Paradise Flycatcher	<i>Terpsiphone</i>	<i>viridis</i>	Muscicapidae	LC	3F
White-bellied Crested Flycatcher	<i>Elminia</i>	<i>albiventris</i>	Muscicapidae	LC	3F
White-tailed Crested Flycatcher	<i>Elminia</i>	<i>albonotatus</i>	Muscicapidae	LC	3F
Blue-mantled crested/Crested Flycatcher	<i>Trochocercus</i>	<i>cyanomelas</i>	Muscicapidae	LC	3F
Richard's Pipit	<i>Anthus</i>	<i>novaeseelandiae</i>	Motacillidae	LC	2FE
Tree Pipit	<i>Anthus</i>	<i>trivialis</i>	Motacillidae	LC	3F
Grassland Pipit	<i>Anthus</i>	<i>cinmoneus</i>	Motacillidae		3F
Yellow throated long claw	<i>Macronyx</i>	<i>croceus</i>		LC	1FE
Cape Wagtail	<i>Motacilla</i>	<i>capensis</i>	Motacillidae	LC	3F
Grey Wagtail	<i>Motacilla</i>	<i>cinerea</i>	Motacillidae	LC	3F
Mountain Wagtail	<i>Motacilla</i>	<i>clara</i>	Motacillidae	LC	3F
Yellow Wagtail	<i>Motacilla</i>	<i>flava</i>	Motacillidae	LC	2F
Pink-footed Puffback	<i>Dryoscopus</i>	<i>angolensis</i>	Malaconotidae	LC	1F
Northern Puffback	<i>Dryoscopus</i>	<i>gambensis</i>	Malaconotidae	LC	3F
Red-eyed Puffback	<i>Dryoscopus</i>	<i>senegalensis</i>	Malaconotidae	LC	1
Luhder's Bush Shrike	<i>Laniarius</i>	<i>luhderi</i>	Malaconotidae	LC	3F
Montane Sooty Boubou	<i>Laniarius</i>	<i>poensis</i>	Malaconotidae	LC	3F
Doherty's Bush Shrike	<i>Malaconotus</i>	<i>dohertyi</i>	Malaconotidae	LC	3F
Lagden's Bush Shrike	<i>Malaconotus</i>	<i>lagdeni</i>	Malaconotidae	NT	3F
Many-coloured Bush Shrike	<i>Malaconotus</i>	<i>multicolor</i>	Malaconotidae	LC	3F
Black-fronted Bush-Shrike	<i>Malaconotus</i>	<i>nigrifrons</i>	Malaconotidae		1F
Brown-headed Tchagra	<i>Tchagra</i>	<i>australis</i>	Malaconotidae	LC	3F
Red-backed Shrike	<i>Lanius</i>	<i>collurio</i>	Laniidae	LC	1F
Common Fiscal	<i>Lanius</i>	<i>collaris</i>	Laniidae	LC	3F
Mackinnon's Shrike	<i>Lanius</i>	<i>mackinnoni</i>	Laniidae	LC	3F
Sharpe's Starling	<i>Cinnyricinclus</i>	<i>sharpii</i>	Sturnidae	LC	3F
Slender-billed Chestnut-winged Starling	<i>Onychognathus</i>	<i>tenuirostris</i>	Sturnidae	LC	3F
Waller's Chestnut-winged Starling	<i>Onychognathus</i>	<i>walleri</i>	Sturnidae	LC	3F
Stuhlmann's Starling	<i>Poeoptera</i>	<i>stuhlmanni</i>	Sturnidae	LC	3F
Collared Sunbird	<i>Anthreptes</i>	<i>collaris</i>	Nectariniidae	LC	3F
Blue-headed Sunbird	<i>Nectarinia</i>	<i>alinae</i>	Nectariniidae	LC	3F

Greater Double-collared sunbird	<i>Nectarinia</i>	<i>afra</i>	Nectariniidae	LC	3F
Blue-throated Brown Sunbird	<i>Cyanomitra</i>	<i>cyanolaema</i>	Nectariniidae	LC	1
Malachite Sunbird	<i>Nectarinia</i>	<i>famosa</i>	Nectariniidae	LC	3F
Bronze Sunbird	<i>Nectarinia</i>	<i>kilimensis</i>	Nectariniidae	LC	3F
Olive Sunbird	<i>Cyanomitra</i>	<i>olivacea</i>	Nectariniidae	LC	3F
Northern Double-collared Sunbird	<i>Nectarinia</i>	<i>preussi</i>	Nectariniidae	LC	2F
Purple-breasted Sunbird	<i>Nectarinia</i>	<i>purpureiventris</i>	Nectariniidae	LC	3F
Regal Sunbird	<i>Cinnyris</i>	<i>regia</i>	Nectariniidae	LC	3F
Rockefeller's Sunbird	<i>Cinnyris</i>	<i>rockefelleri</i>	Nectariniidae	VU	3F
Little Green Sunbird	<i>Anthreptes</i>	<i>seimundi</i>	Nectariniidae	LC	1
Scarlet-chested Sunbird	<i>Chalcomitra</i>	<i>senegalensis</i>	Nectariniidae	LC	1FE
Variable Sunbird	<i>Cinnyris</i>	<i>venusta</i>	Nectariniidae	LC	3F
Yellow White-eye	<i>Zosterops</i>	<i>senegalensis</i>	Zosteropidae	LC	3F
Yellow Bishop	<i>Euplectes</i>	<i>capensis</i>	Ploceidae	LC	3FE
Black-winged Red Bishop	<i>Euplectes</i>	<i>hordeaceus</i>	Ploceidae	LC	1FE
Strange Weaver	<i>Ploceus</i>	<i>alienus</i>	Ploceidae	LC	3F
Stuhlmann's/Baglafaecht Weaver	<i>Ploceus</i>	<i>baglafaecht</i>	Ploceidae	LC	3F
Dark-backed Weaver	<i>Ploceus</i>	<i>bicolor</i>	Ploceidae	LC	3F
Black-headed/Village Weaver	<i>Ploceus</i>	<i>cucullatus</i>	Ploceidae	LC	3F
Brown-capped Weaver	<i>Ploceus</i>	<i>insignis</i>	Ploceidae	LC	3F
Black-billed Weaver	<i>Ploceus</i>	<i>melanogaster</i>	Ploceidae	LC	3F
Pin-tailed Whydah	<i>Vidua</i>	<i>macroura</i>	Ploceidae	LC	3F
Dusky Twinspot	<i>Euschistospiza</i>	<i>cinereovinacea</i>	Estrildidae	LC	3FE
Dusky Crimson-wing	<i>Cryptospiza</i>	<i>jacksoni</i>	Estrildidae	LC	3F
Red-faced Crimson-wing	<i>Cryptospiza</i>	<i>reichenovii</i>	Estrildidae	LC	3F
Abyssinian Crimson-wing	<i>Cryptospiza</i>	<i>salvadorii</i>	Estrildidae	LC	2F
Shelley's Crimson-wing	<i>Cryptospiza</i>	<i>shellei</i>	Estrildidae	VU	2F
Black-headed Waxbill	<i>Estrilda</i>	<i>atricapilla</i>	Estrildidae	LC	3F
Yellow-bellied Waxbill	<i>Estrilda</i>	<i>melanotis</i>	Estrildidae	LC	3F
Black-crowned Waxbill	<i>Estrilda</i>	<i>nonnula</i>	Estrildidae	LC	3F
Fawn-breasted Waxbill	<i>Estrilda</i>	<i>paludicola</i>	Estrildidae	LC	3F
Crimson rumped waxbill	<i>Estrilia</i>	<i>rhodopyga</i>	Estrildidae		2F
Red-cheeked Cordon-bleu	<i>Uraeginthus</i>	<i>bengalus</i>		LC	1FE
African Firefinch	<i>Lagonosticta</i>	<i>rubricata</i>	Estrildidae	LC	2F
Grey-headed Negrofinch	<i>Nigrita</i>	<i>canicapilla</i>	Estrildidae	LC	3F
White-breasted Negrofinch	<i>Nigrita</i>	<i>fusconota</i>	Estrildidae	LC	2F
Red-headed Bluebill	<i>Spermophaga</i>	<i>ruficapilla</i>	Estrildidae	LC	3FE
Black and White Mannikin	<i>Lonchura</i>	<i>bicolor</i>	Estrildidae	LC	1F
Bronze Mannikin	<i>Lonchura</i>	<i>cucullata</i>	Estrildidae	LC	3F
Golden-breasted Bunting	<i>Emberiza</i>	<i>flaviventris</i>	Fringillidae	LC	3F
Cinnamon-breasted Rock Bunting	<i>Emberiza</i>	<i>tahapisi</i>	Fringillidae	LC	1
Oriole Finch	<i>Linurgus</i>	<i>olivaceus</i>	Fringillidae	LC	2F
Thick-billed Seed-eater	<i>Serinus</i>	<i>burtoni</i>	Fringillidae	LC	3F
Yellow-crowned Canary	<i>Serinus</i>	<i>canicollis</i>	Fringillidae	LC	3F
African Citril	<i>Serinus</i>	<i>citrinelloides</i>	Fringillidae	LC	3F
Streaky Seed-eater	<i>Serinus</i>	<i>striolatus</i>	Fringillidae	LC	3F



## Appendix 2: Nyungwe Mammal List 2008

FAMILY	SPECIES	ENGLISH	ORDER	IUCN Threat Category
Cercopithecidae	<i>Cercopithecus aethiops</i>	Vervet monkey	Primate	LC
Cercopithecidae	<i>Cercopithecus ascanius</i>	Redtail monkey	Primate	LC
Cercopithecidae	<i>Cercopithecus hamlyni</i>	Owl-faced monkey	Primate	VU
Cercopithecidae	<i>Cercopithecus lhoesti</i>	L'hoest's monkey	Primate	VU
Cercopithecidae	<i>Cercopithecus mitis</i>	Blue monkey	Primate	LC
Cercopithecidae	<i>Cercopithecus mona</i>	Mona's monkey	Primate	LC
Cercopithecidae	<i>Colobus angolensis</i>	Angolan colobus	Primate	LC
Cercopithecidae	<i>Lophocebus albigena</i>	Grey-cheeked Mangabey	Primate	LC
Cercopithecidae	<i>Papio anubis</i>	Olive Baboon	Primate	LC
Galagonidae	<i>Galago inustus</i>	Eastern Needle-clawed Galago	Primate	LC
Loridae	<i>Perodictus potto</i>	Bosman's potto	Primate	
Hominidae	<i>Pan troglodytes</i>	Chimpanzee	Primates	EN
Canidae	<i>Canis adustus</i>	Side-striped Jackal	Carnivora	LC
Felidae	<i>Felis aurata</i>	Golden Cat	Carnivora	NT
Felidae	<i>Felis Serval</i>	Serval	Carnivora	LC
Felidae	<i>Felis silvestris</i>	Wild Cat	Carnivora	LC
Felidae	<i>Panthera pardus</i>	Leopard	Carnivora	NT
Herpestidae	<i>Atilax paludinosus</i>	Marsh Mongoose	Carnivora	LC
Herpestidae	<i>Herpestes ichneumon</i>	Ichneumon Mongoose	Carnivora	LC
Herpestidae	<i>Herpestes sanguineus</i>	Slender mongoose	Carnivora	LC
Viverridae	<i>Civettictis civetta</i>	African Civet	Carnivora	LC
Viverridae	<i>Genetta servalina</i>	Servaline Genet	Carnivora	LC
Viverridae	<i>Genetta tigrina</i>	Blotched Genet	Carnivora	LC
Viverridae	<i>Nandinia binotata</i>	African Palm Civet	Carnivora	LC
Lutrinae	<i>Aonyx congicus</i>	Congo Clawless Otter	Carnivora	LC
Procaviidae	<i>Dendrohyrax dorsalis</i>	Western Tree Hyrax	Hyracoidea	LC
Bovidae	<i>Cephalophus nigrifrons</i>	Black-fronted duiker	Artiodactyla	LC
Bovidae	<i>Cephalophus silvicultor</i>	Yellow-backed duiker	Artiodactyla	LC
Bovidae	<i>Cephalophus weynsi</i>	Weyn's duiker	Artiodactyla	LC
Suidae	<i>Hylochoerus meinertzhageni</i>	Giant Forest Hog	Artiodactyla	LC
Suidae	<i>Potamochoerus larvatus</i>	Bushpig	Artiodactyla	LC
Manidae	<i>Manis tricuspis</i>	African white-bellied pangolin	Pholidota	NT
Chrysochloridae	<i>Chrysochloris stuhlmanni</i>	Stuhlmann's golden mole	Insectivora	LC
Soricidae	<i>Crocidura lanosa</i>	Musk Shrew	Insectivora	EN
Soricidae	<i>Crocidura nigrofusca</i>	Musk Shrew	Insectivora	LC
Soricidae	<i>Crocidura occidentalis</i>		Insectivora	
Soricidae	<i>Crocidura maurisca</i>	Gracile Naked-tailed Shrew	Insectivora	LC
Soricidae	<i>Paracrocidura maxima</i>	East African Montane Shrew	Insectivora	NT
Soricidae	<i>Ruwenzorisorex suncoides</i>	Osgood's Montane Shrew	Insectivora	VU
Soricidae	<i>Scutisorex somereni</i>	Hero Shrew	Insectivora	LC
Soricidae	<i>Sylvisorex granti</i>	Least Long-tailed Forest Shrew	Insectivora	LC
Soricidae	<i>Sylvisorex lunaris</i>	Moon Forest Shrew	Insectivora	VU
Soricidae	<i>Sylvisorex vulcanorum</i>	Forest Shrew	Insectivora	NT
Rhinolophidae	<i>Rhinolophus maclaudi</i>	Maclaud's Horseshoe Bat	Micro-chiroptera	EN
Rhinolophidae	<i>Rhinolophus hilli</i>	Horseshoe bat	Micro-chiroptera	CR EN
Vespertilionidae	<i>Pipistrellus africanus</i>	Pipistrelles sp	Micro-chiroptera	
Vespertilionidae	<i>Pipistrellus kuhlii</i>	Pipistrelles sp	Micro-chiroptera	
Vespertilionidae	<i>Pipistrellus capensis</i>	Pipistrelles sp	Micro-chiroptera	LC
Vespertilionidae	<i>Pipistrellus eisenrauti</i>	Pipistrelles sp	Micro-chiroptera	DD
Vespertilionidae	<i>Scotoecus hirundo</i>	dark-winged lesser house bat	Micro-chiroptera	LC
Vespertilionidae	<i>Miniopterus inflatus</i>	Long fingered bats	Micro-chiroptera	
Vespertilionidae	<i>Kerivoula cuprosa</i>	copper woolly bat	Micro-chiroptera	DD

Nycteridae	<i>Nycteris argae</i>	Slit-faced bats	Micro-chiroptera	
Nycteridae	<i>Nycteris nana</i>	Slit-faced bats	Micro-chiroptera	LC
Pteropodidae	<i>Lissonycteris angolensis</i>	Angolan Fruit Bat	Mega-Chiroptera	LC
Pteropodidae	<i>Rousettus aegyptiacus</i>	Egyptian Fruit Bat	Mega-Chiroptera	LC
Pteropodidae	<i>Rousettus lanosus</i>	Long-haired Rousette	Mega-Chiroptera	LC
Pteropodidae	<i>Stenonycteris lanosus</i>	Mountain Fruit Bat	Mega-Chiroptera	LC
Pteropodidae	<i>Megaloglossus woermanni</i>		Mega-Chiroptera	
Pteropodidae	<i>Hypsignathus monstrosus</i>	Hammer-headed fruit bat	Mega-Chiroptera	LC
Cricetidae	<i>Cricetomys gambianus</i>	Forest Pouched Rat	Rodentia	LC
Cricetidae	<i>Delanymys brooksi</i>	Delany's Mouse	Rodentia	VU
Cricetidae	<i>Dendromus mesomelas</i>	Climbing Mouse	Rodentia	LC
Cricetidae	<i>Dendromus sp</i>	Climbing Mouse	Rodentia	
Cricetidae	<i>Deomys ferrugineus</i>	Congo Forest Mouse	Rodentia	LC
Cricetidae	<i>Otomys denti</i>	Montane Groove-toothed Rat	Rodentia	LC
Cricetidae	<i>Otomys tropicalis</i>	Tropical Groove-toothed Rat	Rodentia	LC
Rhizomyidae	<i>Tachyoryctes splendens</i>	Orange-toothed Mole Rat	Rodentia	LC
Anomaluridae	<i>Anomalurus derbianus</i>	Lord Derby's Anomalure	Rodentia	LC
Sciuridae	<i>Funisciurus carruthersi</i>	Carruther's Mountain Tree Squirrel	Rodentia	LC
Sciuridae	<i>Funisciurus pyrropus</i>	Cuvier's Fire-footed Squirrel	Rodentia	LC
Sciuridae	<i>Heliosciurus ruwenzorii</i>	Montane Sun Squirrel	Rodentia	LC
Sciuridae	<i>Paraxerus alexandri</i>	Alexander's squirrel	Rodentia	LC
Sciuridae	<i>Paraxerus boehmi</i>	Boehm's squirrel	Rodentia	LC
Sciuridae	<i>Protoxerus stangeri</i>	African Giant Squirrel	Rodentia	LC
Hystriidae	<i>Atherurus africanus</i>	Brush-tailed porcupine	Rodentia	LC
Muridae	<i>Colomys goslingi</i>	Velvet Rat	Rodentia	LC
Muridae	<i>Hybomys univittatus</i>	Peter's Striped Mouse	Rodentia	LC
Muridae	<i>Hylomyscus denniae</i>	Eastern African Montane Wood Mouse	Rodentia	LC
Muridae	<i>Hylomyscus stella</i>	Stella Hylomyscus	Rodentia	LC
Muridae	<i>Lemniscomys striatus</i>	Common Striped Grass Mouse	Rodentia	LC
Muridae	<i>Hybomys univittatus</i>	Hump-nosed mice	Rodentia	
Muridae	<i>Lophuromys flavopunctatus</i>	Eastern Brush-furred Rat	Rodentia	LC
Muridae	<i>Lophuromys luteogaster</i>	Brush-furred Rat	Rodentia	LC
Muridae	<i>Lophuromys rahmi</i>	Brush-furred Rat	Rodentia	EN
Muridae	<i>Lophuromys woosnami</i>	Woosnam's Brush-furred rat	Rodentia	LC
Muridae	<i>Malacomys longipes</i>	Long-footed Rat	Rodentia	LC
Muridae	<i>Mus bufo</i>	Western Rift Pygmy Mouse	Rodentia	LC
Muridae	<i>Mus minutoides</i>	Pygmy Mouse	Rodentia	LC
Muridae	<i>Mus triton</i>	Grey-bellied Pygmy Mouse	Rodentia	LC
Muridae	<i>Oenomys hypoxanthus</i>	Rusty-nosed Rat	Rodentia	LC
Muridae	<i>Praomys degraafi</i>	Soft-furred rat	Rodentia	
Muridae	<i>Praomys jacksoni</i>	Jackson's Soft-furred Rat	Rodentia	LC
Muridae	<i>Rattus rattus</i>	Black Rat	Rodentia	LC
Muridae	<i>Thamnomys venustus</i>	Kemp's Forest Rat	Rodentia	VU
Thryonomyidae	<i>Thryonomys gregorianus</i>	Marsh Cane Rat	Rodentia	LC